

Order Designation

RadarNative Access

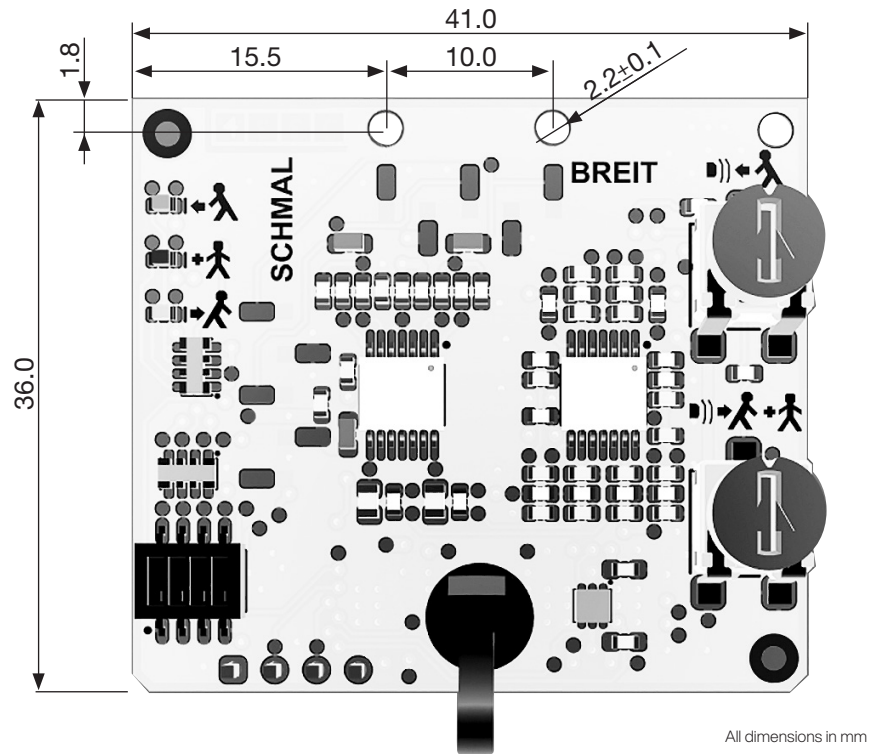
Radar motion detector for detecting and counting objects in entry/exit systems

Art.Nr. 10000562

Overview

- ① Radar module
- ② Potentiometer
Proximity detection
- ③ Potentiometer
Distance detection
Counting pulse
- ④ LED green:
Proximity detection
LED yellow:
Counting pulse
LED red:
Distance detection
- ⑤ Connector plug

Dimensions



Technical Data

Operating principle	Doppler Radar
Detection speed	min. 0.1 m/s / max. 3.0 m/s (measured in sensor axis)
Labeling	CE
Coverage	0.5 – 2.5 m
Operating frequency	24.15 GHz - 24.25 GHz K-band
Transmitting power	< 20 dBm EIRP
Operating mode	Radar motion detector
Function display	LED green Proximity detection LED yellow Counting pulse LED red Distance detection
Operating elements	1 x potentiometer Detection field for proximity detection 1 x potentiometer Detection field for distance detection and counting pulse
Operating voltage	12 - 15 VDC ±0%
No-load current	< 60 mA
Power consumption	< 0.5 W
Signal outputs	1 x output Proximity detection 1 x output Counting pulse 1 x output Distance detection
Circuit type	PNP / active-switching / short-circuit proof
Switching voltage	max. 15 VDC
Switching current	max. 100 mA
Fall time	1s Proximity detection 250ms Counting pulse 1s Distance detection
Ambient temperature	-20° C to +55° C
Relative humidity	max. 90%, non-condensing
Protection class	none
Connection	Modi II plug 6pin
Service life	MTBF 50,000h