

We are specialist in:



Door automation



Barrier systems



Security



Gate automation



Fire protection



Perimeter protection



Lifts



People counter



Traffic engineering



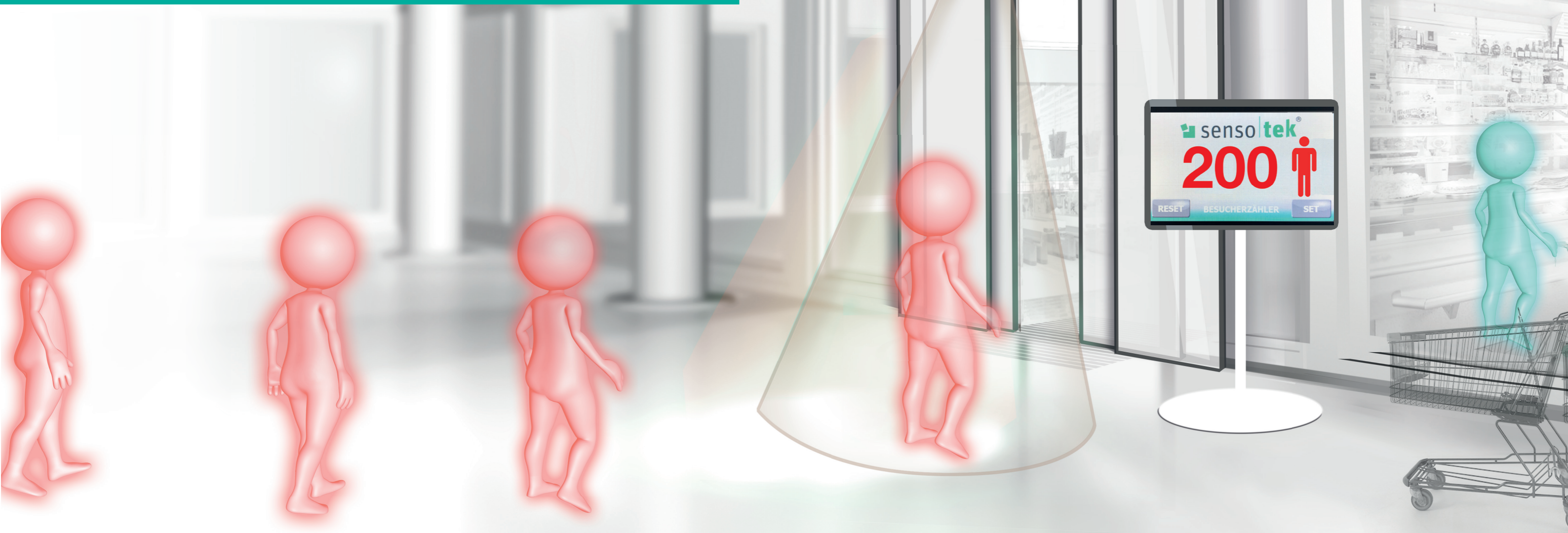
Escalators



Buses and trains

Digital Access Management

A visual store entrance control system that manages people flow in and out of stores, mandated by local government rules during the Corona crisis. Valuable staff can focus on their daily tasks!



Sensotek GmbH
Sales Partner in affiliation with Pepperl+Fuchs Group
Stuttgarter Strasse 119, 73061 Ebersbach/Fils, Germany
Phone: +49 7153 60860-0
info@sensotek.com, www.sensotek.com

Subject to changes, © Sensotek GmbH
Printed in Germany, Part. No. 030-1051 20-06-02

Sensotek. Intelligent Sensor Solutions.



Digital people counting to manage people flow

Exact people counting at entrances and exits.

Precise, and intuitive with additional statistical information.

Protecting people is our highest priority.

Government regulations require exact counts of people in public space. The DPC System designed by Sensotek provides a flexible system to meet all local requirements.

But how can this be achieved?

There are several entrances and exits to buildings, and these are often not separated. A precise counting by humans is usually not feasible. This is exactly where the digital entrance control from Sensotek comes into place, using time-of-flight

technology (TOF) for people counting. The system counts persons passing through with directional evaluation and can be configured for simple usage (one entrance and exit door) or more complex (several entrances and exits) people counting, depending on the requirements.

The system has an accuracy of over 99%. It is not affected by environmental influences, such as temperature and light conditions.

Highlights:

- Complete System (plug + play)
- Easy installation
- Compatible with most existing door control systems
- Setting of maximum number of people via touch panel
- Visual and acoustic signals can be activated or deactivated via touch panel
- Automatic doors can be integrated into the total system (activate or lock)
- Multi-Entrance/Exit systems are possible (special request)
- Exact people counting including direction of traffic flow
- 3D TOF sensor exceeding 99% accuracy

Basic System (DPC-B)

- Radar sensor with counting function
- Interface
- Touch Panel 5" with integrated control unit

Classic System (DPC-C)

- 3D TOF Sensor
- Interface
- Touch Panel 5" with integrated control unit

Premium System (DPC-P)

- 3D TOF Sensor
- Interface
- Touch Panel 5" with integrated control unit
- Mini PC
- 32" TFT monitor

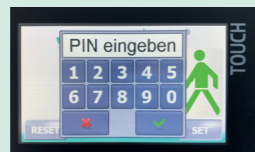
Simple installation

The touch screen is connected to the interface via Ethernet cable. Existing door systems can be controlled via the interface.

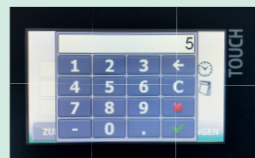


Simple setup

You access the setup menu via the touch panel.

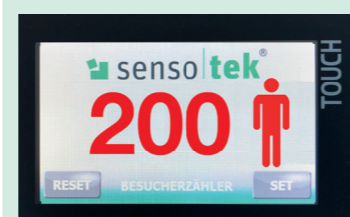


Just enter your access code and define the maximum number of people depending on your sales area.



Customer information

For example, the customer panel informs customers how many people are in the shopping area. The familiar traffic-light man in green or red informs whether the shops, exhibitions, galleries, or memorials may be entered.



Premium System (DPC-P)

A mini PC and 32" TFT monitor enables the customer to be even better informed with visual overviews. The monitors can also be networked and set-up at several exits.



Typical Applications

- Shops / retail stores
- Pharmacies
- Supermarkets
- Restaurants and bars
- Beverage markets
- Bakeries / butcher shops
- Workshops
- Schools / universities / institutions / public facilities and authorities
- Museums and exhibitions, galleries and memorials

One person is allowed per 10 square meters (100 square feet) of accessible exhibition space.