



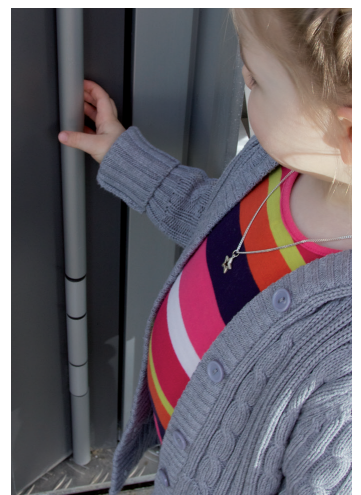
Product family



Protective profiles

for the opening face of the secondary closing edge

- Protective profiles reliably safeguard the gap between the door leaf and the frame
- Suitable for retrofitting
- Maintenance free
- Profiles available in anodised aluminium or coated
- Suitable for outdoor use
- Fixed lengths available
- For all hinge diameters
- Available as a set ready for installation below, between and above the hinges

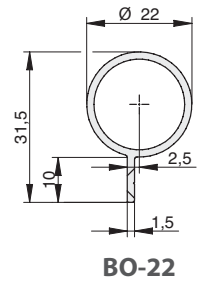




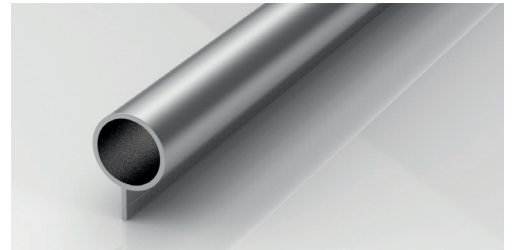
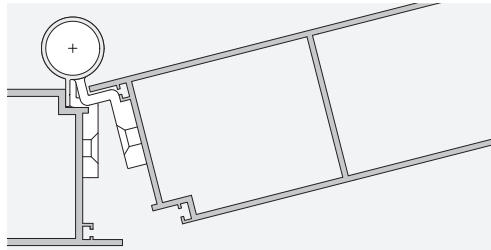
BO

Protective profiles for doors with flush fit profile

- Hinge Ø 22 - 23 mm



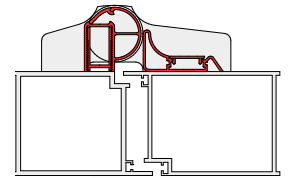
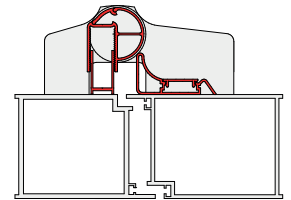
Application



BA-28

Opening face protective system BA-28 for universal hinges on metal doors

- Variable adjustment options
- Profile color: C-0 silver anodized; special colors available
- Concealed fixing



Technical details:

For pivotal points of 20 - 36 mm

Delivery length: 1900mm

