

www.tuv.com  
ID 1111209885

## New - NR-32 UniSafe® sets new standards

The new Athmer developed NR-32 UniSafe® finger protection system convinces due to improved safety, additional functionality and a unique design.

### SAFETY in use

- Optimal covering of the door gap at the door bottom and protection caps defuse profile ends with tamper-proof CLICKsystem and increased stability housing

### One DESIGN for all applications

- Integration in existing interior and door designs for a continuous design in the building (internal & external use)

### CLICKsystem for a quick & safe mounting / demounting

- Time- & money-saving with intelligent fixing (less fixing points)

### PROPERTY FIXING in 2 steps

- Mounting in 2 steps on site prevents the product being damaged during building phase

### NOTCH on site without difficulty

- Fixing profile prepared as standard to fit on existing hardware devices like pushbar, touchbar or ram protection.

### RAM PROTECTION for tough environments (e.g. hospital, airport)

- Deflection shield as additional protection for the door and frame

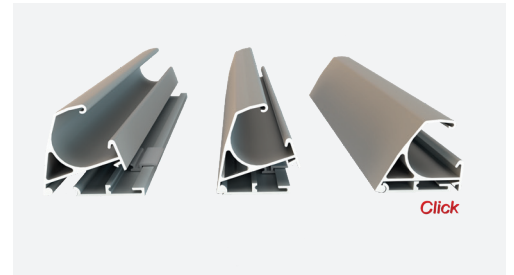
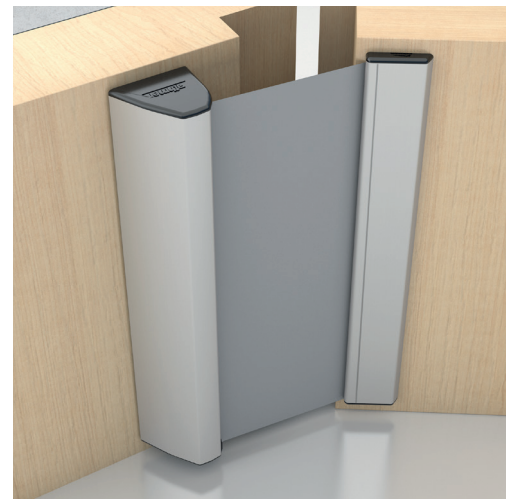
### CLEANING and SERVICE due to easy unlocking

- Trouble-free cleaning and service on hinges, adjusting of drop seals, etc.

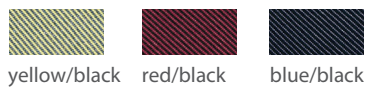


## NR-32 UniSafe®

- Easy to mount / demount
- Roller-type protector that automatically maintains a constant tension
- one DESIGN for all applications
- flexible choice of colours
- CLICKsystem with concealed fixing
- Fabric made of fire retardant synthetic fibre
- Optional: **NR-32 UniSafe® XL** with 320 mm travel length, black fabric
- Optional: **Red Protection** (look at separate datasheet)



### Colour Cover



anthracite / for external use as w-proof w-proof

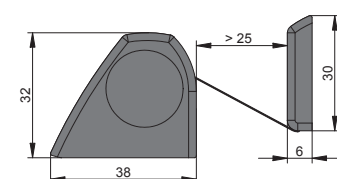
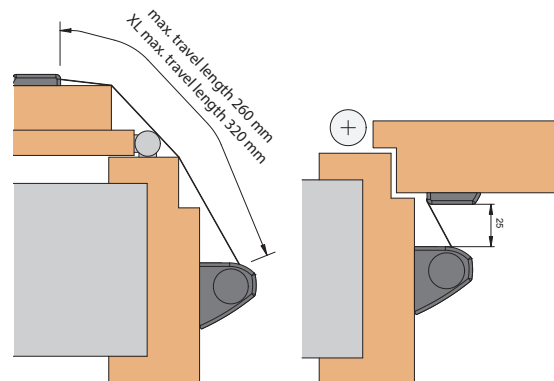
Other colours on request.

### Colour Housing ohne Aufpreis



### Technical Data

Reduction in width of opening	32 mm
Maximum length	2.500 mm
Standard length*	1.925 mm, 2.050 mm
Length for power operated doors**	2.000 mm, 2.500 mm
Minimum length	325 mm
Special lengths	available
Can be cut to length	-



\* Length supplied for standard doors in accordance with DIN 18101 with a basic dimension of 2.000.

For doors with a basic dimension of 2125, we recommend that you order a length of 2.050 mm.

\*\*In accordance with EN 16005 - Power operated pedestrian doorsets - Safety in use